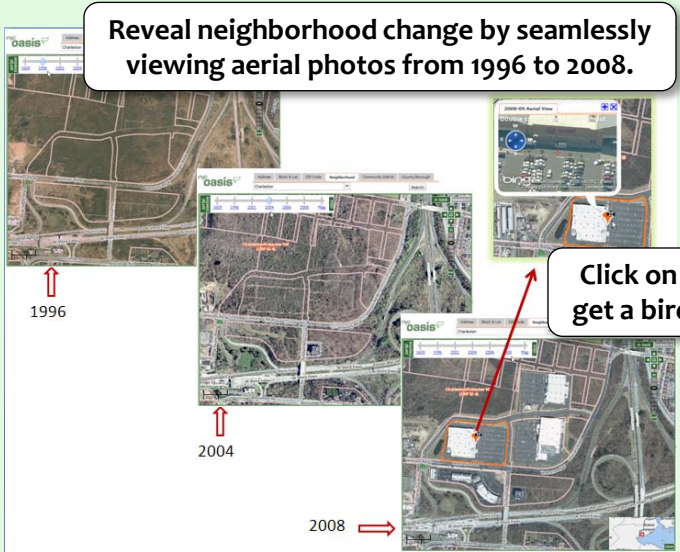
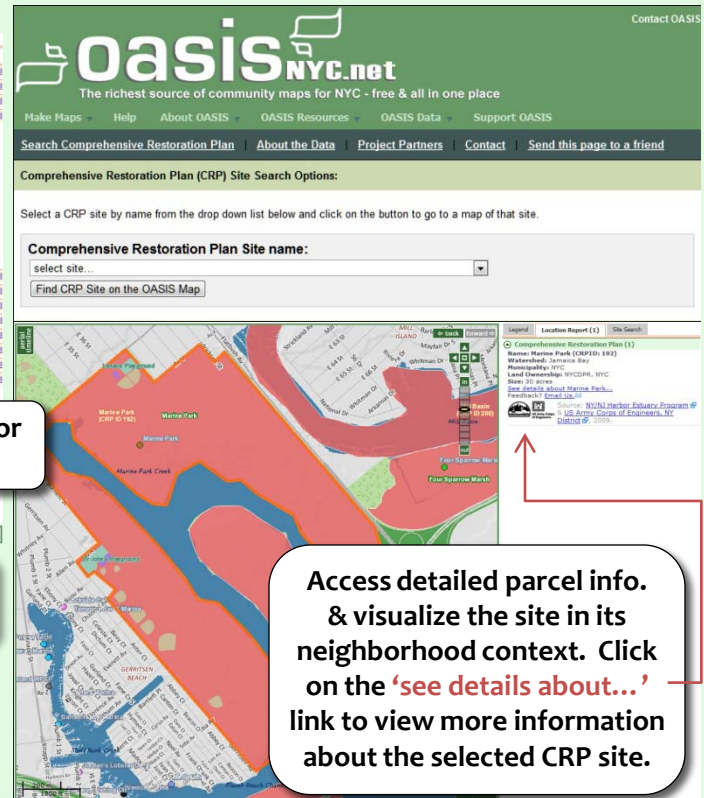
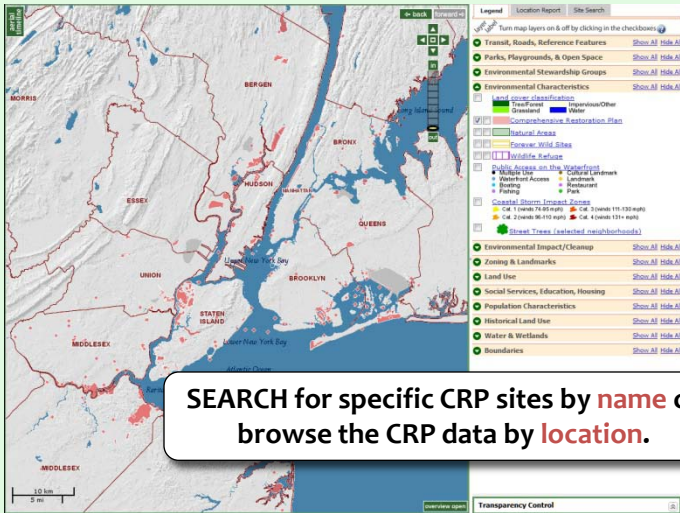


Comprehensive Restoration Plan (CRP) on OASIS -

Open Accessible Space Information System at

<http://www.oasisnyc.net/crp/crpsearch.aspx>

OASIS is a richly-layered interactive map of open space data (parks, gardens, wetlands, etc), land use patterns, schools, housing, transit, Census maps, environmental hazards, and the new Comprehensive Restoration Plan.



The OASIS website provides the richest source of community maps for New York City – free and all in one place. It provides a platform to easily display the Comprehensive Restoration Plan data in relation to a wealth of other features. For more information regarding the OASIS maps, visit:

www.OASISnyc.net



To get involved with the Comprehensive Restoration Plan or to provide feedback on CRP data contact:

habitat@harborestuary.org

Developed by the CUNY Mapping Service at the Center for Urban Research, CUNY Graduate Center, on behalf of the OASIS Steering Committee.

